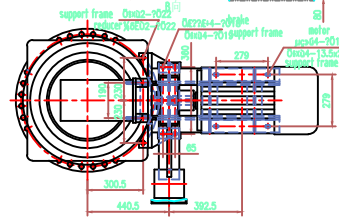
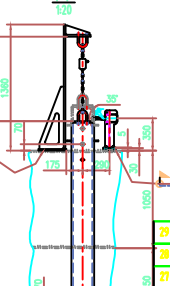
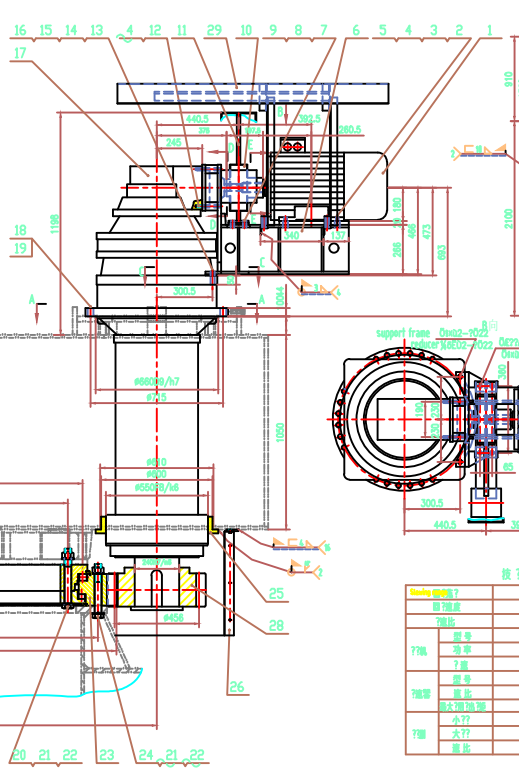
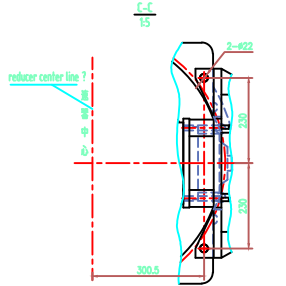
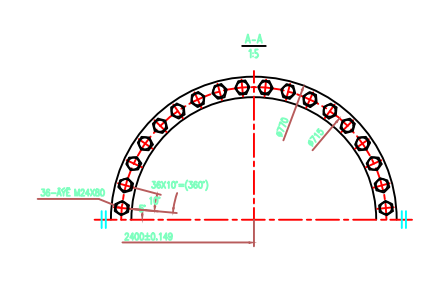


MD9-ELRS



Technical parameter

Rotary speed	±10°
Rotary speed of motor	0.104 r/min
Total Ratio of speed	9423.08
Model	QARP380.6A
power	15Kw
rotational speed	980 r/min
model	P3KA16
Reducer	ratio of speed 1000 (94.3.04)
output torque Nm	90000 Nm
detail gear	m=24 Z=19 Xc=+0.5353
large gear	m=24 Z=119 Xc=+0.5
ratio of speed	9.4211

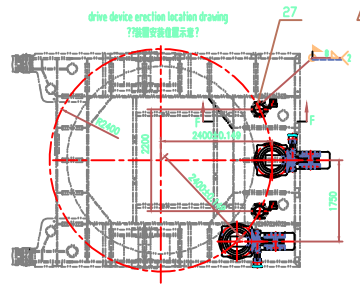
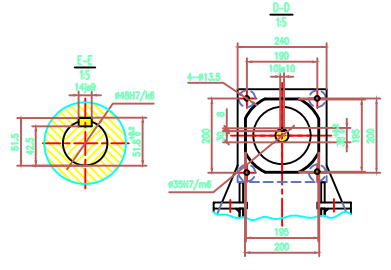
29	SRB-4-TP	778	2								
28	SRB-4-4	100	2	100							
27	SRB-4-5P	100	2								
26	SRB-4-4P	100	1								
25	SRB-4-3	100	2	134.58							
24	GB/T 1971-2002	179	12	10.5							
23	GB/T 1971-2002	179	1								
22	GB/T 971-2002	179	2	200							
21	GB/T 6778-2004	179	1	14							
20	GB/T 5782-2004	179	12	10.5							
19	GB/T 1971-2002	179	12								
18	GB/T 5782-2004	179	12								
17	P3KA16	179	2								
16	JB/T204758-2004	179	1								
15	GB/T 1971-2002	179	4								
14	GB/T 6778-2004	179	4								
13	GB/T 5782-2004	179	4								
12	GB/T 5782-2004	179	6								
11	Yw20-250/E38	179	2								
10	SRB-4-2P	179	2								
9	GB/T 1971-2002	179	6								
8	GB/T 6778-2004	179	6								
7	GB/T 5782-2004	179	6								
6	SRB-4-P	179	2								
5	JB/T204758-2004	179	1								
4	GB/T 1971-2002	179	12								
3	GB/T 6778-2004	179	6								
2	GB/T 5782-2004	179	6								
1	QARP380.6A	179	2								

轴7轴径

轴径	±10°
轴径	0.104 r/min
轴径	9423.08
轴径	QARP380.6A
轴径	15Kw
轴径	980 r/min
轴径	P3KA16
轴径	ratio 1000 (94.3.04)
轴径	90000 Nm
轴径	m=24 Z=19 Xc=+0.5353
轴径	m=24 Z=119 Xc=+0.5
轴径	9.4211

Technical parameter

Rotary speed	110two direction	Model	131.40.4.000.402(rothe Erde)
Rotary speed	0.104 r/min	Gear ran	179
Model	CA210 (Hagglunds)	Ratio	24
Power	15Kw	subcomponent	+0.5
Rotary speed	980r/min	Gear	19
Pressure	350 bar	Ratio	24
Ratio	9423.08	Subcomponent	+0.5353



drive device erection location drawing

技术要求

slewing device